

The image features a solid purple background. A large, stylized shape, resembling a wide, shallow 'U' or a partial circle, is formed by a dense pattern of small white dots. The dots are arranged in a way that they fill the shape, with some gaps between them, creating a textured effect. The shape is centered horizontally and occupies most of the vertical space.

*minijet*<sup>™</sup>

## customer care number

As part of Rexair's Customer Care program, each MiniJet receives a Customer Care serial number only after passing Quality Control assurance testing. This serial number provides:

- ✓ Ownership identification for you
- ✓ Warranty identification for your Distributor
- ✓ Assurance of passing Quality Control testing
- ✓ Assurance of "factory-fresh" condition

For future reference, record the serial number in the space provided below. No authentic, new MiniJet should be sold without this number. If the serial number is missing, Rexair makes no claim as to the origin, age, or condition of the unit. If you are unable to locate a serial number on your MiniJet, please contact Rexair's customer service department.

The MiniJet effectively cleans stubborn spots and stains on carpeted floors, upholstery and fabric. It is easy to use and attaches to the front of the Rainbow. The MiniJet's long, flexible vacuum hose provides excellent maneuverability and access to small areas. It is also useful for wet pickup using just the bare handle with no attachment.

**Rexair**<sup>®</sup>  
LLC

50 W. Big Beaver Road, Suite 350 | Troy, Michigan 48084 | USA  
(248) 643-7222 | [custserv@rexairllc.com](mailto:custserv@rexairllc.com)  
[rainbowsystem.com](http://rainbowsystem.com)

Rainbow, RainbowMate, RainMate, AquaMate, Rexair, The Power of Water, Wet Dust Can't Fly and the configuration of the Rainbow Cleaning System are registered trademarks of Rexair LLC, Troy, Michigan, United States.

### MINIJET SERIAL NUMBER



### YOUR AUTHORIZED RAINBOW DISTRIBUTOR

NAME	
ADDRESS	
CITY/STATE/POSTAL	
PHONE	
E-MAIL	

← Contact your local Authorized Rainbow Distributor for advice on caring for your MiniJet, warranty coverage, replacement parts and service information.

# important safety instructions



## PLEASE READ ALL INSTRUCTIONS BEFORE USING THIS UNIT

When using an electrical appliance, basic precautions should always be followed, including the following:

### **⚠ WARNING: TO REDUCE RISK OF FIRE, ELECTRICAL SHOCK OR INJURY**

1. Do not leave appliance when plugged in. Unplug from outlet when not in use and before servicing.
2. To reduce the risk of electrical shock, use indoors only.
3. To avoid risk of electrical shock and to reduce risk of fire, use only Rainbow cleaning products intended for use with this machine.
4. The MiniJet contains an electric pump. To avoid risk of electrical shock, DO NOT immerse the MiniJet body in water while filling or cleaning the tank.

### **⚠ IMPORTANT**

5. The MiniJet tank is designed to use only Rainbow *AquaMate Shampoo* solution and clean, cold tap water. To avoid damage to the MiniJet, do not place any of the following into the water tank:
  - Hot water or liquids
  - Commercially available cleaning liquids or compounds
6. Do not use on unfinished, oiled or waxed wooden boards, unsealed tiles because they may be water-sensitive.
7. Do not use the MiniJet when the water tank is empty. This could result in damage to the pump.
8. Do not immerse the MiniJet body in liquids.
9. For further safety instructions, refer to the Rainbow Owner's Manual.

## SERVICING OF DOUBLE-INSULATED APPLIANCE

In a double-insulated appliance, two systems of insulation are provided instead of grounding. No grounding means is provided on a double-insulated appliance, nor should a means for grounding be added to the appliance. Servicing a double-insulated appliance requires extreme care and knowledge of the system and should be done only by qualified Rainbow service personnel. Replacement parts for a double-insulated appliance must be identical to the parts they replace. A double-insulated appliance is marked with the words "DOUBLE-INSULATION" or "DOUBLE-INSULATED." The Symbol (square within a square) may also be marked on the appliance. Any servicing other than cleaning should be performed by an Authorized Rainbow Distributor or Service Center.



**SAVE THESE  
INSTRUCTIONS**

THIS APPLIANCE IS INTENDED FOR HOUSEHOLD USE ONLY  
USE THE MINIJET ONLY AS DIRECTED IN THIS OWNER'S MANUAL  
USE THE MINIJET WITH MODEL E2 RAINBOW ONLY

# get acquainted with your MiniJet™

1. MiniJet Extractor Tool
2. MiniJet Extractor Tool Lens
3. MiniJet Body
4. MiniJet Tank
5. MiniJet Hose
6. MiniJet Hose Coupling
7. MiniJet Trigger
8. Rainbow\*
9. Rainbow Dolly & Water Basin\*
10. Rainbow AquaMate Shampoo Concentrate

\*Not included



## STORAGE & MAINTENANCE

- a. Remove Extractor Tool from hose wand. Remove the lens and rinse in warm water until clean.
- b. Prior to storing the MiniJet, empty the tank and remove excess remaining water from tank receptacle by vacuuming with the MiniJet hose wand.
- c. Store and allow to dry.



# quick-start guide

## 1. Prepare the floor...

- a. Use the Rainbow to vacuum the entire area to be cleaned, making sure there is no remaining debris on the surface.
- b. Empty and rinse the water basin. Do not refill.

## 2. Prepare the MiniJet...

- a. Begin with an empty water basin. Attach the Rainbow and dolly.
- b. Attach the MiniJet by pressing the hose coupling into the air inlet opening of the Rainbow until it locks.
- c. Measure one capful of Rainbow *AquaMate Shampoo Concentrate* solution and add to the MiniJet tank.
- d. Fill the remainder of the MiniJet tank with cool, clean tap water and secure the cap tightly.
- e. Insert the MiniJet tank into the MiniJet body until you hear it lock into place.

## 3. Clean...

- a. Turn the Rainbow on high mode.
- b. Squeeze the MiniJet trigger and apply solution to the carpet or upholstery. Release the trigger and use the extractor tool to clean the surface with forward and backward movements.
- c. Extract the remaining liquid using very slow backward movements.
- d. For extra dry carpet or upholstery, extract the entire area a second time.
- e. When finished cleaning, empty and rinse the Rainbow water basin. Allow to dry.
- f. Rinse the MiniJet tank with cool, clean tap water. Allow to dry.

---

## frequently asked questions

### **Is the MiniJet safe to use on my carpet and upholstery?**

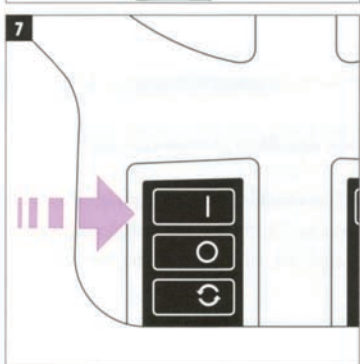
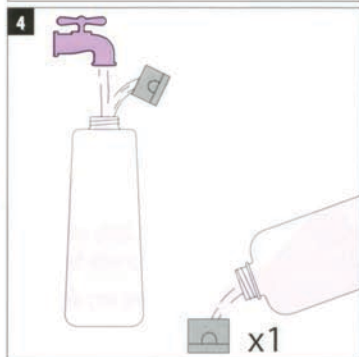
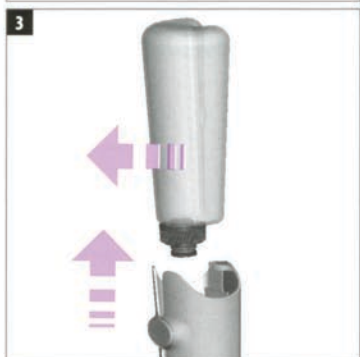
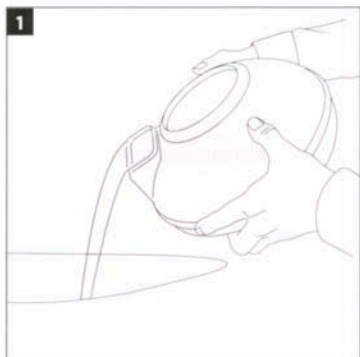
If you have any doubts about the safety of Rainbow *AquaMate Shampoo Concentrate* solution on your carpet, upholstery or fabric, place a small amount of solution on a small, inconspicuous portion of the surface to be cleaned. It is wise to do an initial test cleaning on a hidden section of upholstery to ensure it will not damage the carpet or upholstery.

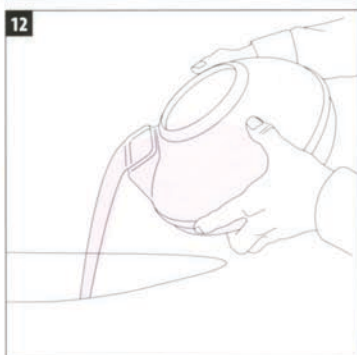
### **Is the MiniJet safe to use around pets?**


Yes, when using the recommended one capful, the Rainbow *AquaMate Shampoo* is not harmful to pets.

### **Where can I have my MiniJet serviced or purchase extra Rainbow *AquaMate Shampoo Concentrate* solution?**

This Rainbow appliance has been thoroughly tested and inspected. For service matters, or to purchase replacement parts or extra *AquaMate Shampoo Concentrate* solution, please contact your local Authorized Rainbow Distributor. If you are unable to contact the Distributor from which you purchased the appliance, visit [rainbowsystem.com](http://rainbowsystem.com) to locate a nearby Authorized Rainbow Distributor.







[rainbowsystem.com](http://rainbowsystem.com)

REXAIR LLC | TROY, MICHIGAN

© 2013 REXAIR LLC | R15815A-0 | PRINTED IN U.S.A.